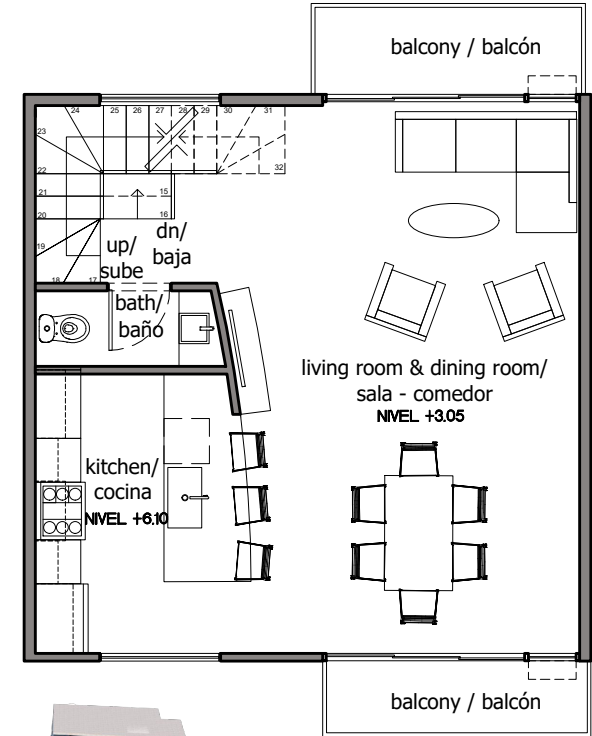
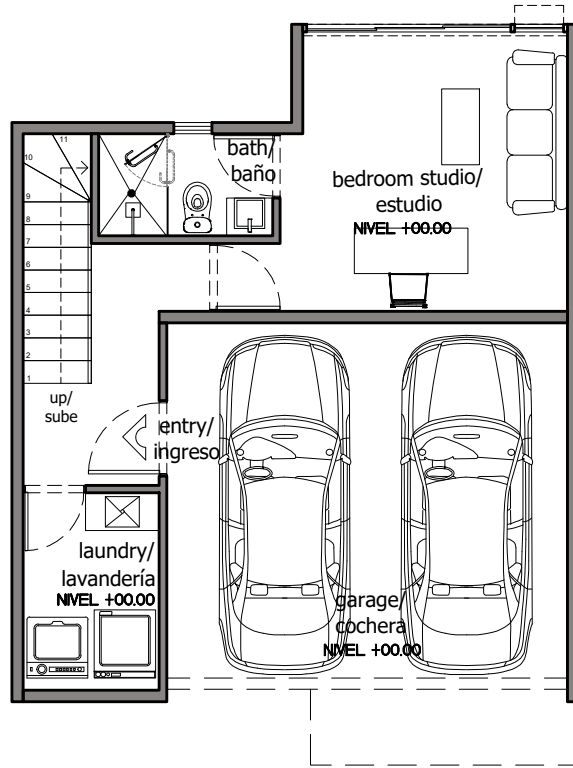




The AVA

PURE PUERTO VALLARTA LIFESTYLE



KEY PLAN



UNIT 12

240.84 s.m.
2,592.38 s.f.

Garage

| | | |
|---|-----------|----------|
| ⊖ | INTERIOR: | 61.95 M2 |
| ⊖ | TERRACE: | 00.00 M2 |
| | TOTAL: | 61.95 M2 |

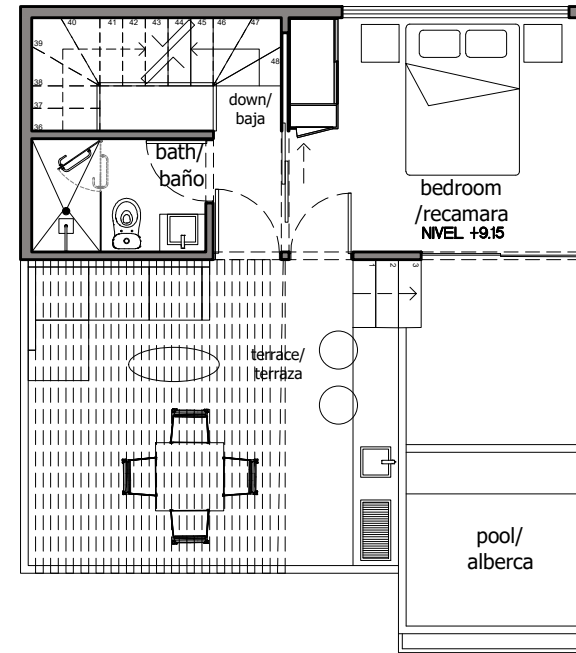
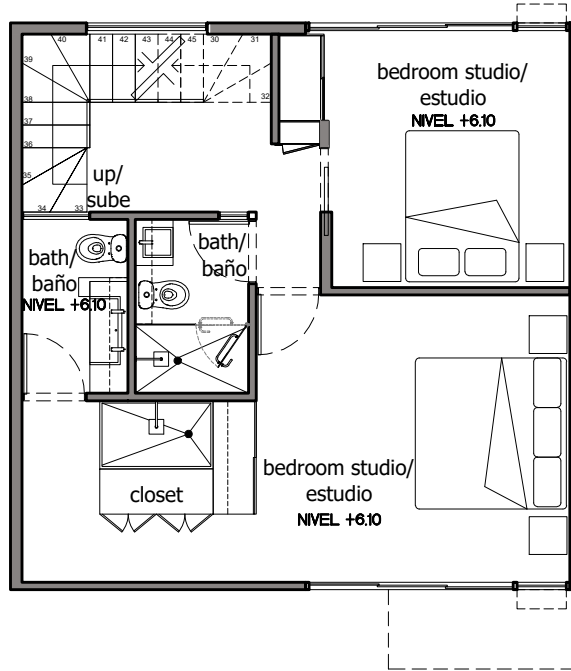
Lower Level

| | | |
|---|-----------|----------|
| ⊖ | INTERIOR: | 55.87 M2 |
| ⊖ | TERRACE: | 7.90 M2 |
| | TOTAL: | 63.77 M2 |



The AVA

PURE PUERTO VALLARTA LIFESTYLE



UNIT 12

240.84 s.m.
2,592.38 s.f.

Upper Level

| | | |
|---|-----------|----------|
| ⊖ | INTERIOR: | 56.25 M2 |
| ⊖ | TERRACE: | 00.00 M2 |
| | TOTAL: | 56.25 M2 |

Roof Top

| | | |
|---|-----------|----------|
| ⊖ | INTERIOR: | 25.12 M2 |
| ⊖ | TERRACE: | 33.75 M2 |
| | TOTAL: | 58.87 M2 |

KEY PLAN



Variations to dimensions and design can occur. Furniture not included. Pools and pergolas depicted in the marketing materials are not included, but are upgrades. Pueden haber variaciones a dimensiones y diseño. Muebles no incluidos. Albercas y pergolas no estan incluidas, y tienen costo adicional.